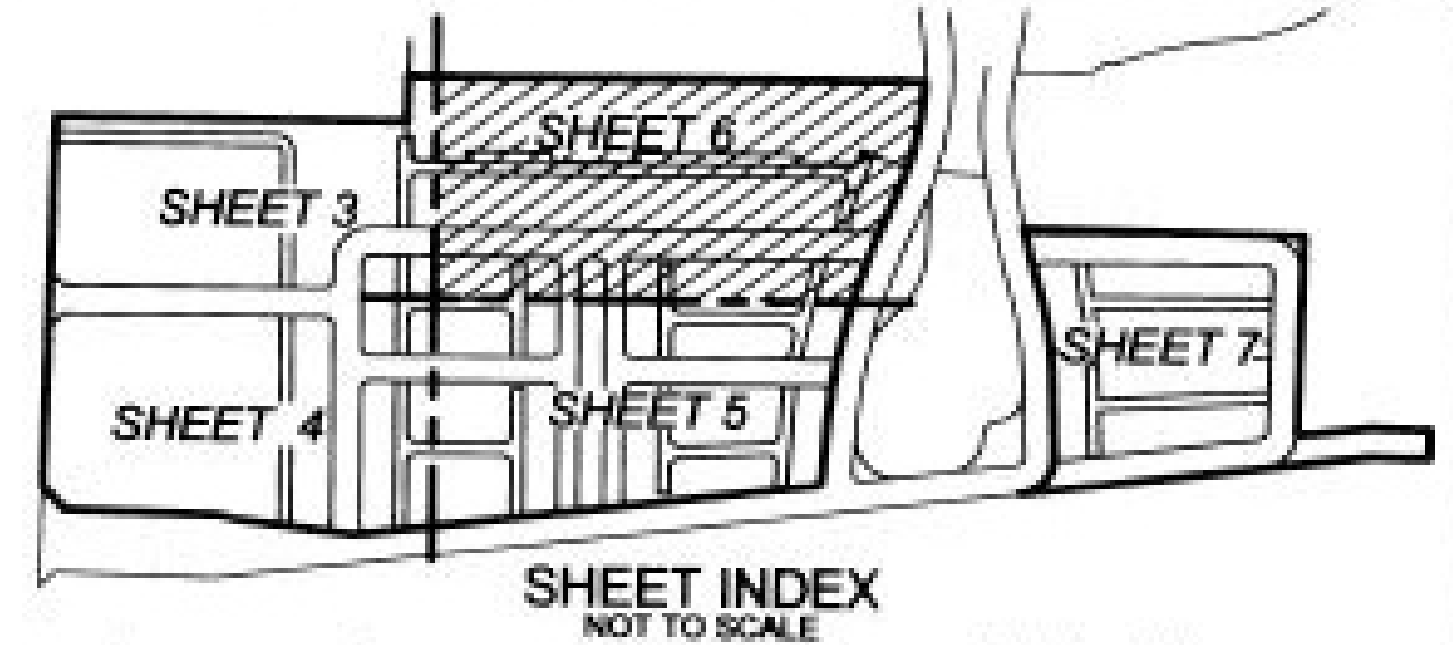
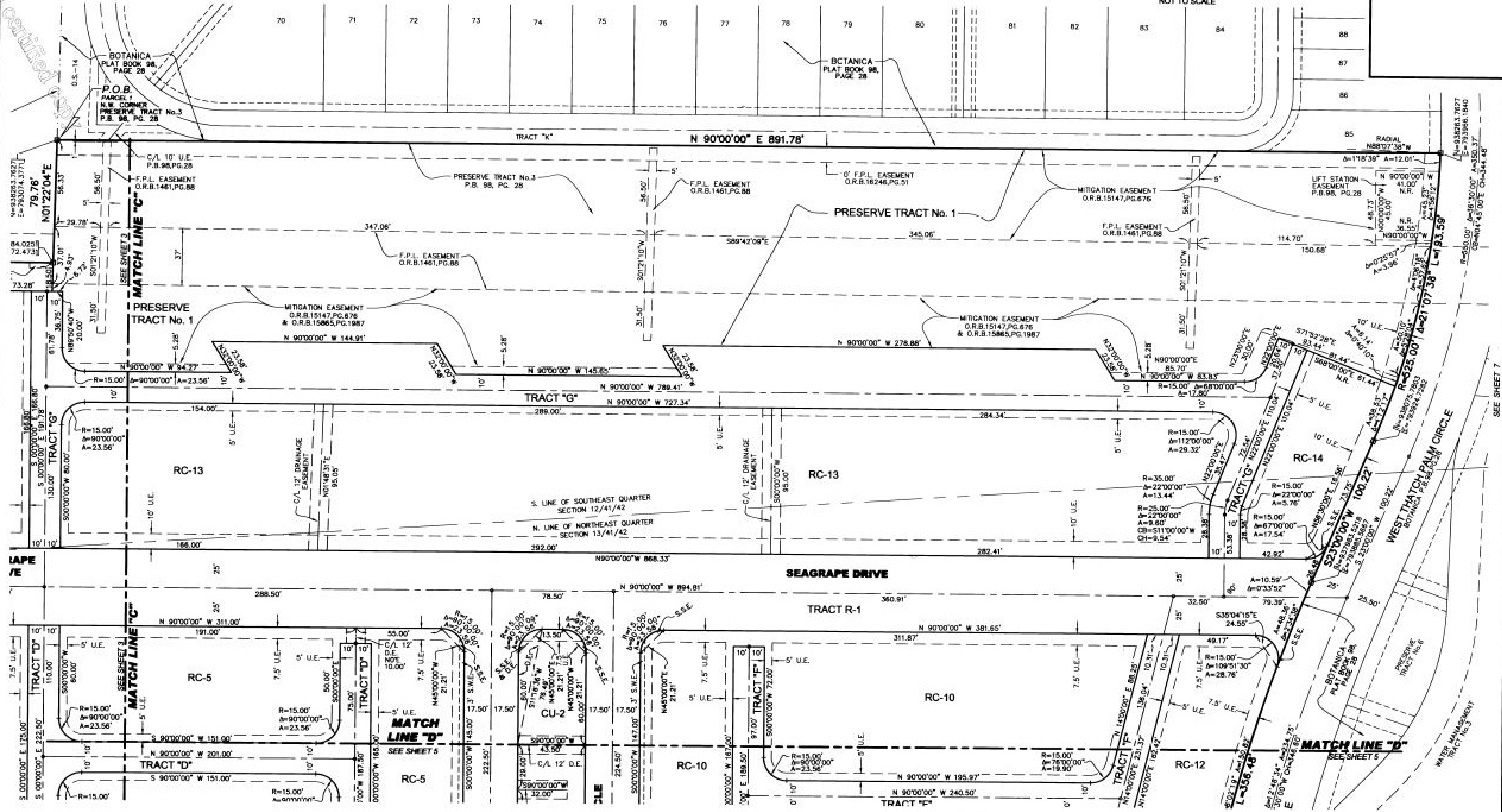


# SEA PLUM

BEING A REPLAT OF A TRACTS C-1, C-2, C-3, C-4, R-3, PRESERVE TRACT No.3, AND A PORTION OF TRACT R-1, BOTANICA AS RECORDED IN PLAT BOOK 98, PAGES 28-49, PUBLIC RECORDS OF PALM BEACH COUNTY, FLORIDA, TOGETHER WITH A PORTION OF SECTION 13, TOWNSHIP 41 SOUTH, RANGE 42 EAST, PALM BEACH COUNTY, FLORIDA, ALL LYING IN SECTIONS 12 AND 13, TOWNSHIP 41 SOUTH, RANGE 42 EAST, TOWN OF JUPITER, PALM BEACH COUNTY, FLORIDA  
APRIL, 2004 SHEET 6 OF 7



143



**LIDBERG LAND SURVEYING, INC.**  
875 West Indian Road, Suite 200, Jupiter, Florida 33468 TEL 561-746-8464

CAD	K:\AUTOCAD\2000\124142\05-097\DWG\03-097-306.DWG				
REF	K:\AUTOCAD\98-150\1608-306.DWG				
PLD	AM	PL 374	PC 35-37	JOB	03-097-306
OFF	W.D.J.	382	38	DATE	06/24/03
CKD	W.D.J.	SHEET 6	OF 7	DFG	06-06/03

This is not a certified copy

SEE SHEET 7

WATER MANAGEMENT TRACT No. 3